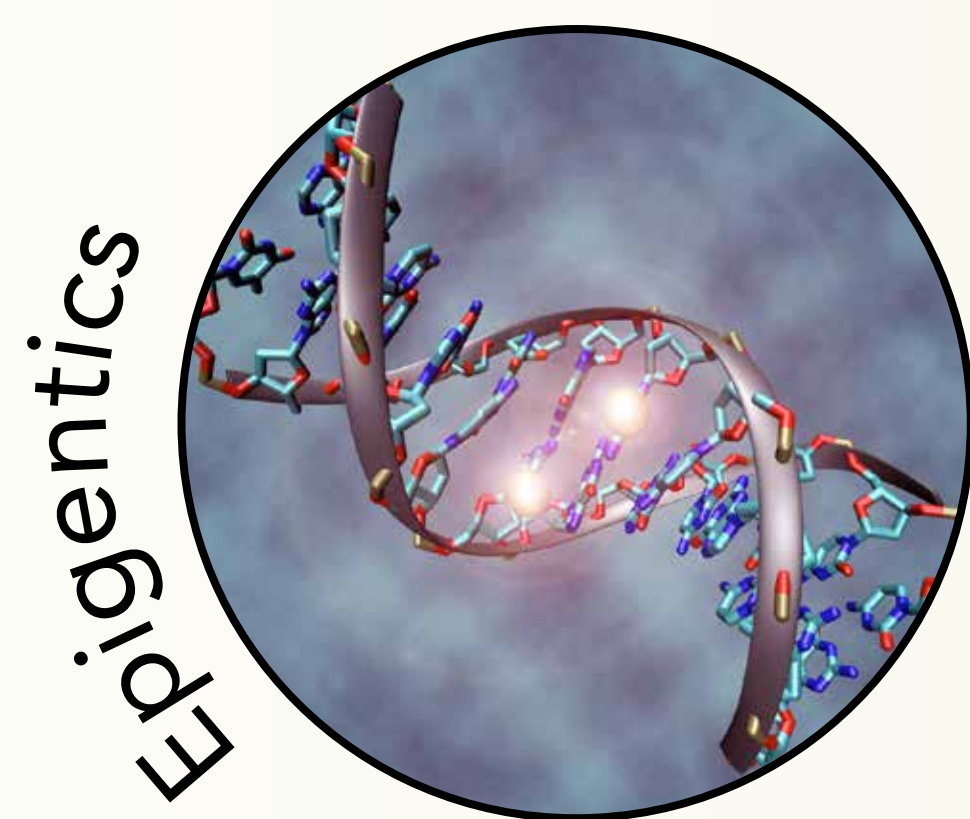
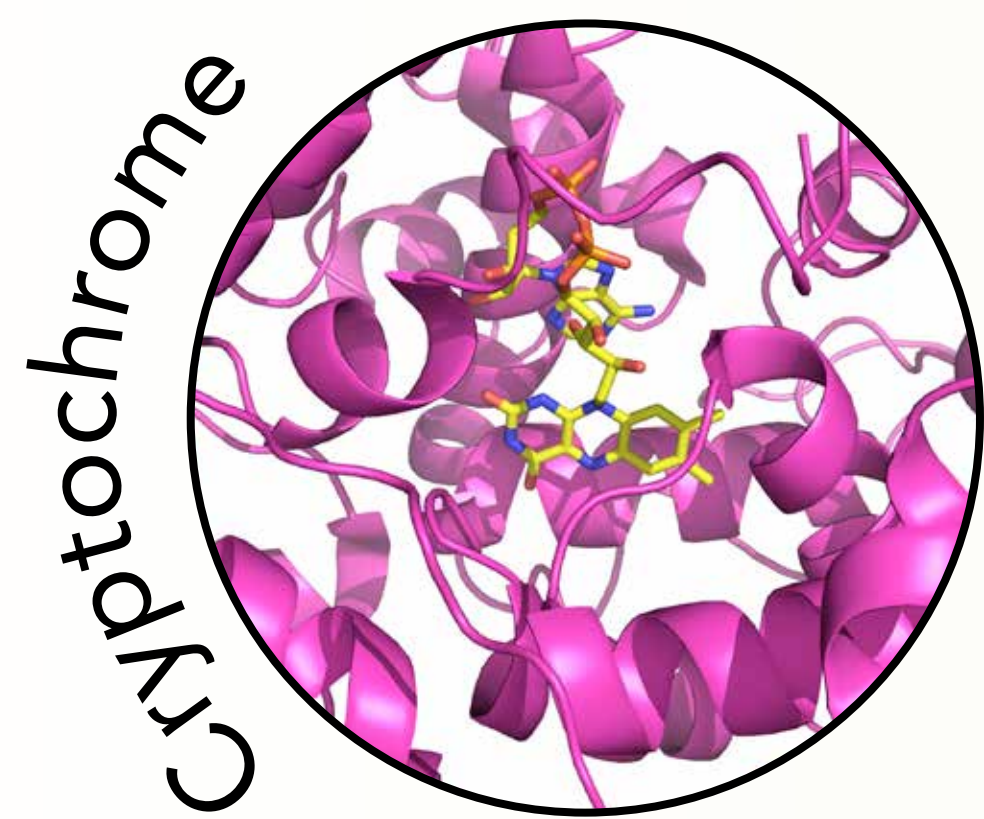


# Animal Navigation is based on **QUANTUM EFFECTS** towards an integrated navigation system



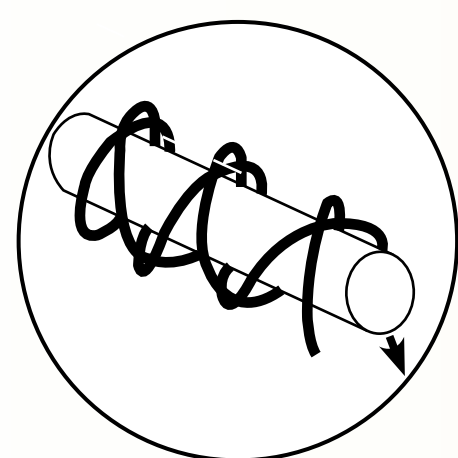
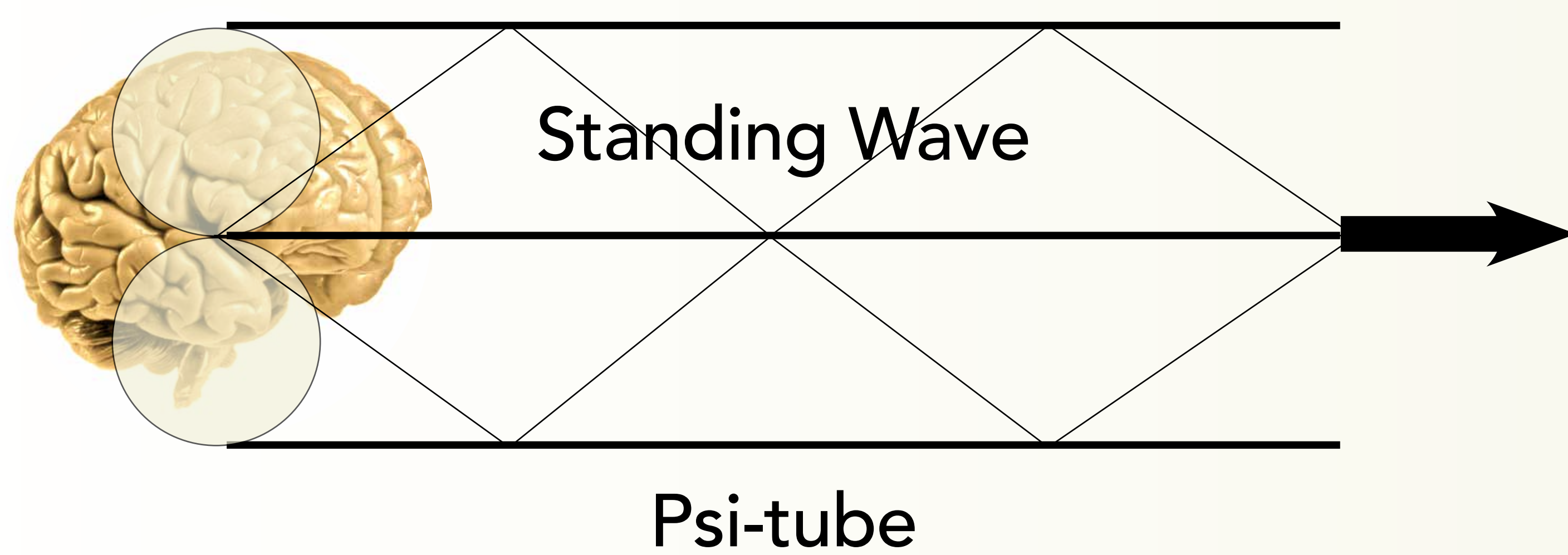
QUANTUM BIOLOGY has been created by the acceptance that quantum effects can operate in the noisy environment of biological bodies.

Peter Hore and recently Jim Khalili have described the quantum nature of the European Robin's cryptochrome based navigation system.

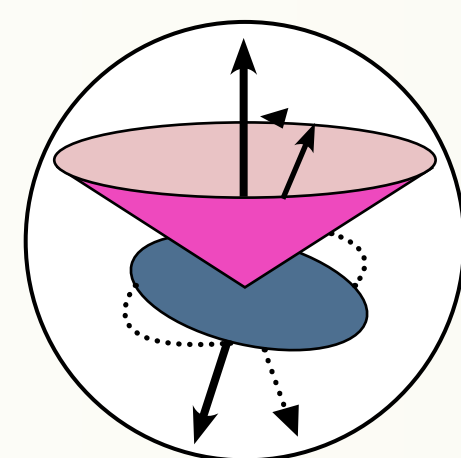


QUANTUM NON-LOCALITY is now recognised as a fundamental property of the Universe which we might express as weird 'Action at a Distance'. **There is mounting evidence that all living creatures experience this phenomenon.**

## COMMUNICATION ALONG A STANDING WAVE



Bifilar Cross Wound Coil



Electron Precession



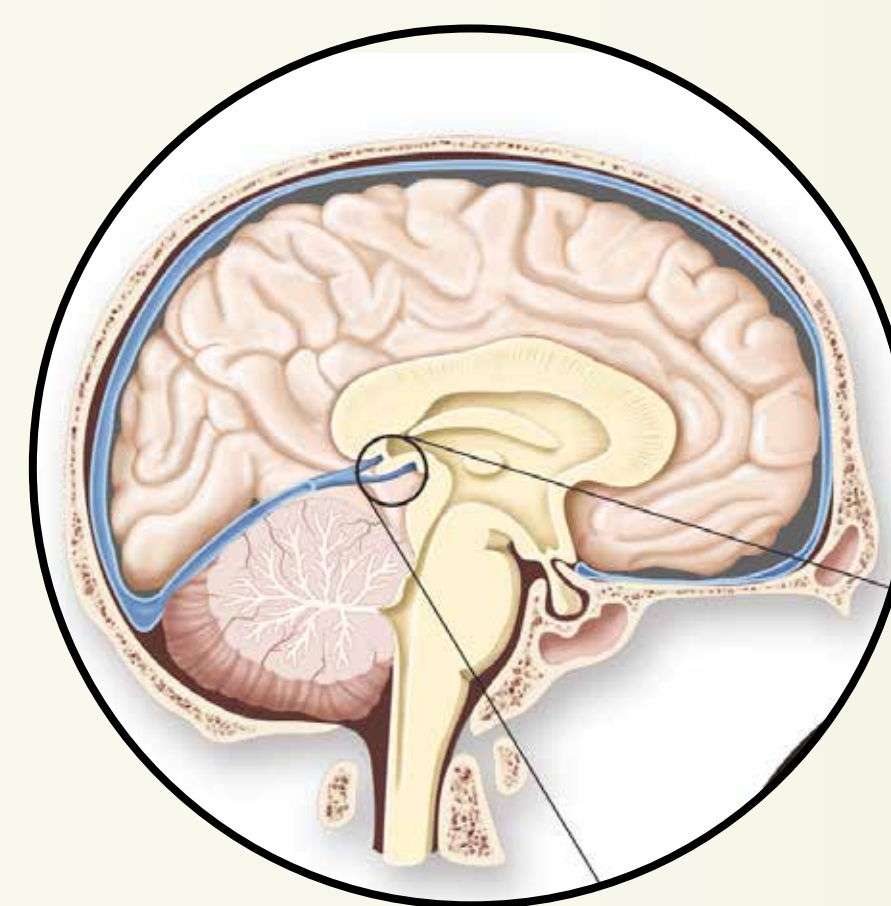
Co-axle

DNA & EPIGENETICS, which Khalili explains may be caused by quantum tunnelling, can explain how fledgling Cuckoos, for instance, navigate to the Congo from Europe without help.

Animals seem to navigate using a sense of direction and following tracks laid down by past generations.

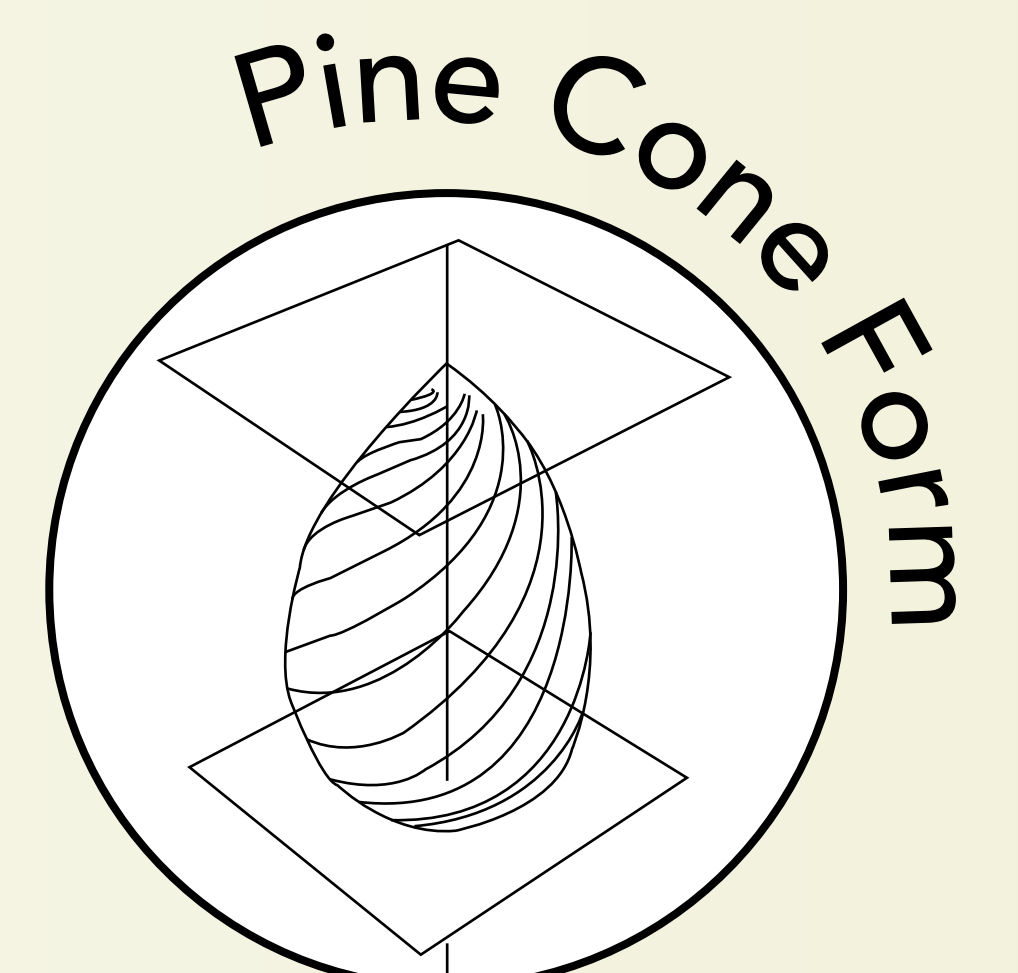
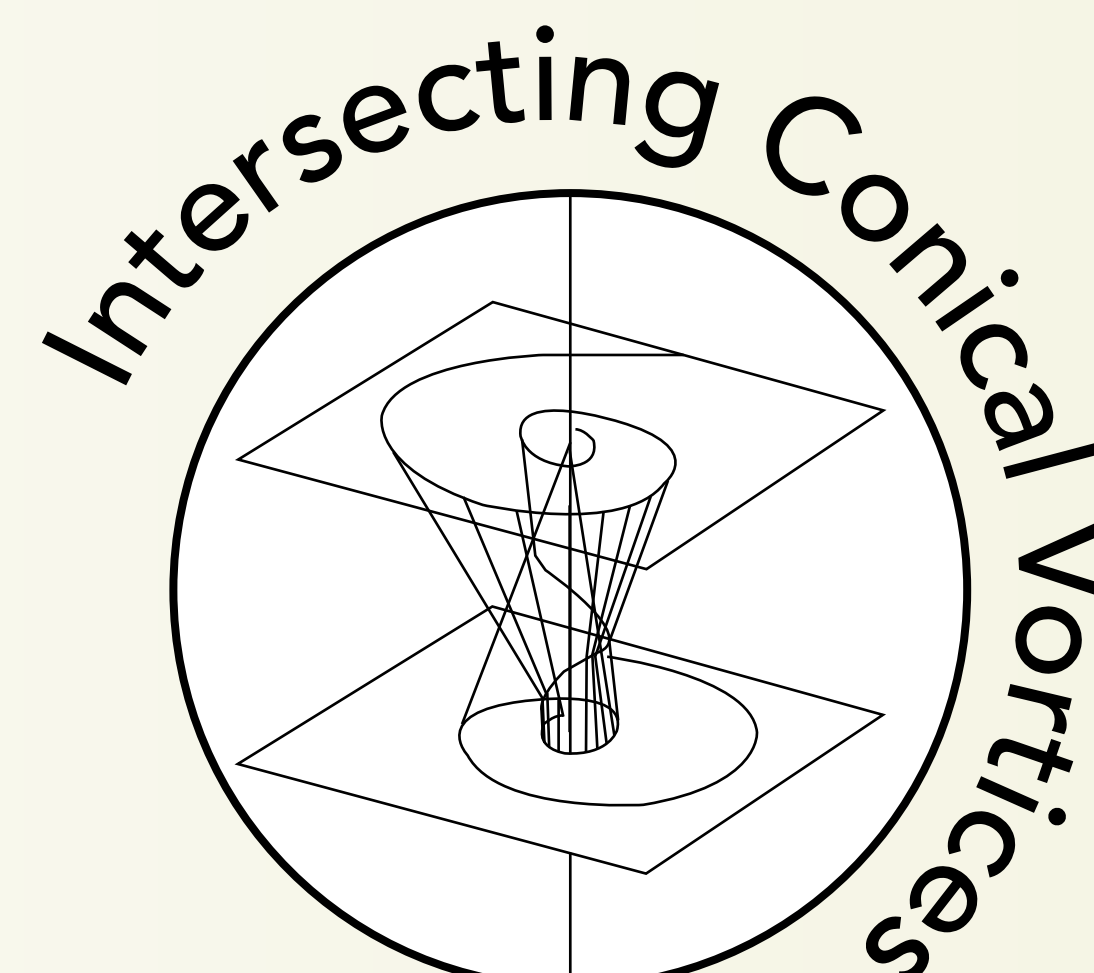
Navigational ability is destroyed by applying a disruptive Larmor 1.3MHz oscillating frequency which destroys the brain's synchronisation to the earth's magnetic field lines.

These are sensed via their pineal glands whose egg shape is ideal as a broad band receiver/transmitter, but when the Pineal is calcified it greatly impairs navigational ability.



Modern navigational systems in missiles use tiny MEMS (piezo-electric rate) gyros for navigation. This idea of a gyro-effect resolves many animals navigational issues, especially those encountered in the high arctic.

## PINEAL GLAND GEOMETRY



## WHAT DOES THE PINEAL GLAND DO?

It resonates with the ambient magnetic field and delivers angular rate and acceleration data.

## WHAT DOES ALL THIS DATA DO?

With Star, Sun and Waypoint updates it generates a BNS - Bird Inertial Navigation System.